



Hopton Road, Hereford, HR1 1BE

Guide Price £260,000

2 1 1



An Exquisitely Charming Edwardian 2 Double Bedroom Terrace House in Hopton Road near Aylestone Hill in Hereford, tastefully finished throughout and Offered With No Onward Chain.

Entrance Hall – Sitting Room – Dining Room – Kitchen – 2 Double Bedrooms – Family Bathroom – Airing Cupboard – Cellar – Storage – Rear Garden – Shed – Front Lawn – Permit On-Street Parking

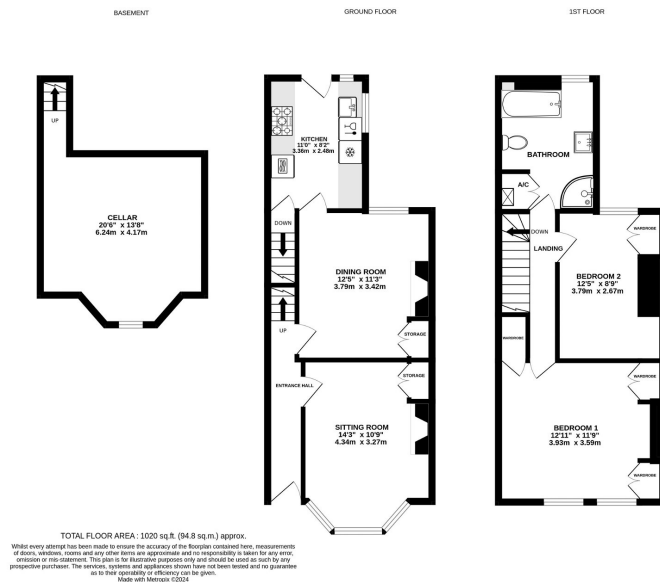
Presenting a stylish yet characterful home. History meets modern comfort in this delightful 2 double bedroom Edwardian terrace, with period features blending seamlessly alongside contemporary upgrades. An original fireplace and bay window in the inviting sitting room is perfect for cosy evenings, while the warmth of the woodburner in the dining room creates a homely atmosphere for gatherings with loved ones.

The Property

Entrance Hall – Stepping under the rain-sheltering storm porch into the entry hall, where light pours in through a transom window and reflects off original floorboards. A period arch with detailed corbels sets the tone, with doors accessing the sitting room and dining room.

Sitting Room – The allure of yesteryear beckons, with an original





- Stunning Edwardian Property
- Bursting With Period Character
- Cellar With Conversion Potential
- 2 Double Bedrooms w/ Built-in Storage
- Offered With No Onward Chain
- Immaculately Presented Throughout

